

Fit and Fashionable - A Gentleman's Ensemble By Lynette Marcione, Placerville, California

When MAFCA fashion judging is offered at a regional or national meet, a limited number of the male gender tends to participate. Some men say they are busy with conflicting events, others indicate they don't want to dress up and be looked over by a panel of judges. However, if you are thinking about participating in judging, or just want to look the part, here are some highlighted examples of the well dressed man to use as a guide.

The fit of a man's daytime suit was different than you see today. The cut of the jacket was generally snug and nipped in at the waist creating a defined silhouette. Slight shoulder padding was starting to appear in 1929. Jacket lapels were either notched or peaked with very specific dimensions. Pants were generally straight and came with or without cuffs. Trousers with pleats were popular. Vests came in a variety of styles to complete the suit but were not always required. A wide selection of shirts were available in silks, cotton broadcloth, and chambray just to name a few. Short and long sleeves were featured in plain cloth, stripes, and tasteful patterns. Collars were detached or attached. Cuffs came with buttons or suitable for cuff links. Ties could be a bowtie or a regular standard neck tie usually made of silk, wool or rayon in a variety of colors and patterns. Handkerchiefs were placed in the breast pocket but not required. Hats were an essential part of the gentleman's outfit. The hat styles were widely varied, the homburg, fedora, straw, and derby were all appropriate for a daytime suit. Overcoats were worn but are very difficult to find today as an original garment. The classic double breasted or single breasted coat were typical of the era. Men wore high top shoes, low top shoes, capped and plain toed shoes that were generally made of leather. Toes could be rounded or squared. Wing tip shoes gave a classic look.

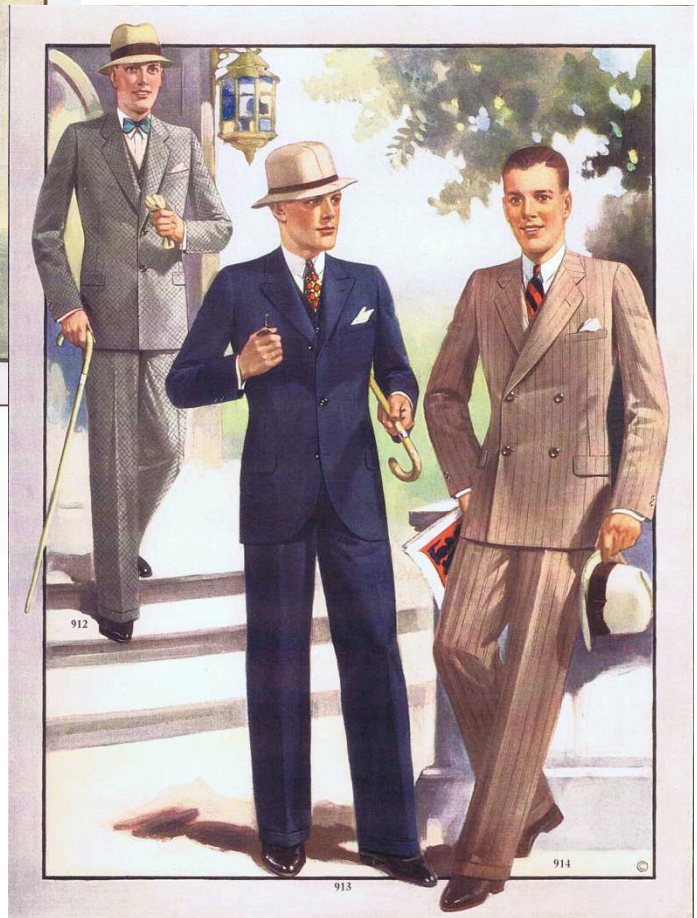
There are many details and styling elements to a gentleman's ensemble not mentioned in this article. However, MAFCA's fashion publications, *Fashion Guidelines*, *The Book of Fashion Facts*, and *The Fashion Files* provide a comprehensive guide to all fashion related items to outfit a gentleman. In the *Fashion Guidelines* a detailed description and illustrations are provided for major garments, headgear, coordinated apparel, accessories, and footgear for almost all walks of life. There is also a dress chart suggesting different modes of attire for all kinds of occasions. Publications are available at MAFCA Headquarters or on the MAFCA website and can be purchased for a reasonable cost. All books have been thoroughly researched by dedicated members of the MAFCA community.

Resources: Styles Correctly Designed for Men and Young Men- Fall and Winter 1930-1931 Bond Street Styles – 1930.



Back of 902
No Vent

Model No. 902
Two-Button Sack
Young Men's Model
Peaked lapels
Back as shown unless otherwise ordered



Back of 912
No Vent

Model No. 912
Two-Button Straight Front Sack
Young Men's Model
Back as shown unless otherwise ordered



Back of 913
No Vent

Model No. 913
Three-Button Sack
Young Men's Model
Semi-peaked lapels
Back as shown unless otherwise ordered




Back of 914
No Vent

Model No. 914
Two-Button Double-Breasted Sack
Young Men's Model
Open notch lapels
Back as shown unless otherwise ordered



 Back 416	No. 416 Two-Button Sack (For Slim Men) Semi-Peaked Lapels Regular Pockets	 Back 417	No. 417 Three-Button Sack (For Slim Men) Open Notch Lapels Regular Pockets	 Back 418	No. 418 Two-Button Sack (For Slim Men) Open Notch Lapels Regular Pockets
---	--	---	---	---	---



 Back of 937 Center Vents	Model No. 937 Three-Button-Thru Topcoat Semi-peaked lapels Welt breast pocket Made with rope shoulders as shown unless otherwise ordered <i>Form fitting back as shown unless otherwise ordered</i>
--	--